

Center for Allied Health Programs

UNIVERSITY OF MINNESOTA



CLS at Conferences
and Tribute to Alumni

P3



Faculty Retirements

P4



2012 Commencement

P5



Program in Clinical Laboratory Sciences

Tech's Talk



From the Director's Desk

A message from Janice Conway-Klaassen, Ph.D., Program Director

Has it been a year *already*? Has it *only* been a year since I arrived? These two questions, in spite of being opposite of each other, describe the world around me as I complete my first full year as program director here at the University of Minnesota. We have had a lot of challenges, but we are used to hard work. We've also had a lot of rewarding moments that keep us going strong.

Like most other departments on campus and throughout the state, we have faced additional budget constraints this past year and are asked to do more with less. However, we have embraced this as an opportunity to reorganize our curriculum, look for opportunities to streamline our work, and protect the quality of education that comes from a degree here in the CLS Program.

We are still in the process of developing a new curriculum—one that updates program content and offers more opportunities for non-traditional students and distance learners.

We have reorganized everyday business activities to minimize any potential negative impacts on our budget bottom line. To help the U of M CLS Program regain its rightful place as a leader in the profession, we have all begun to develop a "Scholarship of Teaching and Learning" strategy.

One of my mentors taught me, "*Don't just work harder—work smarter.*" That has truly been our motto this past year and we are making great strides. As a NAACLS accredited program we need to evaluate the quality of our educational program and how well our graduates are performing to meet the accreditation standards. At the same time, as we move to a blended learning model with content delivered online and face-to-face, we will assess both the model's effectiveness and improvements we can make in the future.

continued on page 2

From the Director's Desk (con't)

By creating a research study about these curriculum changes, we meet several goals with a single project: 1) remodeling and updating the curriculum; 2) evaluating the quality of education; 3) performing and publishing research about the outcomes these changes generate; and 4) providing visibility for the program on campus, throughout the state, and nationally for our profession.

This past year, the U of M CLS Program had four poster presentations, two technology demonstrations, and one session presentation at the Clinical Laboratory Educators Conference 2012, as well as a presentation at ASCLS in July (page 3). Four of our projects were displayed at the Academic Technology Showcase on April 4th at Coffman Union here on campus. We have developed 14 online tutorial modules with grant funding support from the Department of Labor that are being shared with laboratory education programs across the country. CLS faculty will have several publications accepted or submitted this year, including five articles, a book chapter, and one book. We have three virtual course materials ready for sale to other laboratory education programs. We are developing new research studies on whether students modify their learning strategies when enrolled in an online or hybrid course, and if so, how they change.

So you can see that although it has only been a year—WOW what a year it has been!

I hope you enjoy our latest edition of Tech's Talk. Please explore our newly redesigned website to find out more about the updates we are making, meet the faculty and staff, or browse through the Department of Labor funded modules. We would love to hear from you as well. Let us know where you are and what you are doing! This is an incredibly exciting and wonderful time for the CLS program.

Janice M. Conway-Klaassen, PhD, MT(ASCP)SM

jconwayk@umn.edu

612-626-9408

<http://cahp.umn.edu/CLS>

Changes on Campus Near Moos Health Sciences Tower

One attempt at navigating Washington Avenue will make you keenly aware of a big change on campus. The central corridor of the Metro Transit light rail line is alive and well. This above-ground rail line will stretch for 11 miles, linking downtown Minneapolis and St. Paul via the University and the State Capitol. The trains will run along University and Washington Avenues and also connect to the Hiawatha and North Star lines. The East Bank Station is located directly in front of Moos Tower and construction of the platforms is in full progress. Washington Avenue will only be open to pedestrian and bike traffic after the line opens in March 2014.

Major projects also include an expansion of the recreation center and construction of the 4th street residence hall, the biomedical discovery district, and the physics and nanotechnology building.

Current maps and construction information can be found online at: http://lightrail.umn.edu/index_construction.html

Relocation of the Nuclear Magnetic Resonance facility from Nils Hasselmo Hall was necessitated by the vibrations from the light rail line construction and operation. Mayo Garage was renovated and the new NMR facility opened in 2011. The state-of-the-art renovated facility houses eight superconducting magnets used to advance research in areas such as HIV, heart disease, and Alzheimer's. Renovation of the garage also included Mayo Plaza, now graced with curved walkways, benches, and beds of trees, shrubs and flowers.



Top: West-viewing photo of Washington Avenue with Moos Health Sciences Tower on the left. **Bottom:** Artist depiction of an east view of Washington Avenue with Moos Health Sciences Tower on the right. (Source: UM News <http://www1.umn.edu/news/features/2011>)

American Society for Clinical Laboratory Science

The MN Clinical Laboratory Collaborative Meeting (CLC) 2011 was held in Duluth, MN from April 25-27, 2011. The CLS program had 17 students attend on student day, who appreciated the educational topics covered in sessions and the experience of being amongst future colleagues. Patricia Brennecke, Clinical Coordinator for the CLS program, participated in a collaborative keynote to discuss the statewide effort to address the laboratory workforce shortage as part of Healthforce MN. This group, made up of educators, clinical sites, and employers, works to find better ways to tackle this ever-present issue (www.healthforceminnesota.org).



Above: Stephen Weisner is shown giving an informal demonstration of the Program's digital slide library to colleagues at CLEC 2012.

Clinical Laboratory Educators Conference (CLEC) 2012

CLEC 2012 was held in Salt Lake City, UT, from February 23-25. The U of MN CLS program had a great presence with 11 faculty and staff attendees! Dr. Stephen Wiesner discussed the Implementation of Virtual Microscopy for Distributed Hematology Education during a "Hot Topics" session. Posters included: the online modules funded by the Department of Labor grant award; initial results of the efficacy of teaching Special Hematology/Morphology online; a quantitative comparison of scores in the hemostasis course (3 years traditional classroom, 3 years online); and integrating case study portfolios to teach leukemias. Technology demonstrations were given by Pat Brennecke on "Using a Web Based Model for Preceptor Training", and Joanna George on "Teaching the Exclusion Method of Antibody Identification with an Interactive Computer Program". Conference attendees were lining up to learn about what the U of M is doing, and there was an exciting buzz related to our work. Most of all, despite economic and organizational challenges caused by many changes at the U of M, the CLS program continues to move forward under the leadership of our new program director in the field of CLS/MLS education, and that was evident at CLEC.

Special Tribute to Alumni

Karen Ringsrud Honored at 2011 Alumni Banquet



Karen Ringsrud, Class of 1962, was named the 2011 Alumna of the Year at the CLS Alumni Banquet. In 1962, three weeks before she graduated from the Medical Technology Program, Karen learned of an opening for an Instructor in the University of Minnesota's new Medical Laboratory Assistant Program. The program was the first of its kind in the nation, and Karen knew she wanted to be a part of it, so she told Jean Jorgenson (soon to be Jean Linne), Class of 1958, that she wanted the job. That was the beginning of 44 years of teamwork for Karen and Jean at the University of Minnesota.

One week after graduation, Karen married Peter Ringsrud and the two of them embarked on a six-week camping honeymoon trip. Karen says she has never slept in a tent again. That year Karen and Jean also published their first textbook, "Basic Laboratory Techniques for the Medical Laboratory Technician," which is now in its fourth edition. One week after finishing the index for the book, Karen gave birth to her son.

In 1970, at the request of her mentor, Dr. G. Mary Bradley, Karen became an Instructor in the Laboratory Medicine course for second year medical students, working with Jean Linne. She continued teaching this course, eventually as an Assistant Professor in the Department of Laboratory Medicine and Pathology. Their "Atlas of Urinalysis and Body Fluids" was published in 1995.

Both Karen and Jean retired in the summer of 2006. Karen treasured the two years of retirement she had traveling and spending time with her husband before he passed away in 2008. Karen continues to travel, remains active in civic groups, and enjoys spending time with her two grandchildren. She considers herself fortunate to have had the ideal job teaching laboratory medicine at the U of M for 44 years. Her advice to current students is, "When an opportunity presents itself to you, take it!"

Celebrating Service

Faculty Retirements



In November 2011, Patricia Solberg retired after 27 years of service. Pat served as the associate program director and principle student advisor. She was honored with a 2012 Distinguished Alumni Award.



Cheryl Swinehart will retire in summer 2012 after 31 years with the Clinical Laboratory Sciences program. Cheryl is the lead faculty person for Hematology and advises our CLS student government.

Two of our most important faculty members are retiring this year after many years of service to the CLS Program. In November 2011 Patricia Solberg retired after 27 years of dedicated work. After graduating from Gustavus Adolphus College, Pat worked as a staff technologist at Midway Hospital in St. Paul while also teaching Chemistry and Urinalysis. She eventually became the Education Coordinator for the Medical Technology program at Midway Hospital. She continued as the Education Coordinator at Midway until she moved to the University of Minnesota's Medical Technology Program in 1984. Pat is familiar to all of us because she was the heart and soul of the CLS program, serving as the associate program director and principle student advisor to hundreds of CLS students. So many CLS practitioners owe their start to Pat's expert guidance. A reception to celebrate Pat's retirement was held in the Mayo Auditorium reception area in October 2011, with over 100 well-wishers on hand, followed by a dinner at the Campus Club for CLS faculty. Patricia was also honored with a Distinguished Alumni Award at the 2012 CLS Alumni Dinner on April 20th, 2012.

This coming summer Cheryl Swinehart will also step into retirement after 31 years of service to the CLS Program. Cheryl received her BS degree from the University of Wisconsin and her MS degree from the University of Minnesota. She began her laboratory career here at the U of M in the Coagulation Laboratory, first as a student technology supervisor, moving to a position as a research technologist and then as a senior technologist. Cheryl has been a faculty member in the program since 1981 teaching hemostasis as well as taking on the role of Hematology lead faculty member since 2000. Cheryl has been an integral part of the CLS program and acted as the student government advisor. Cheryl had the following words to share regarding her time in CLS: "In the years I've taught, I've seen many changes in how and what we teach. Probably the largest changes have occurred as we've moved so much of our material on-line. My favorite part of teaching has been getting to know so many great young people. As I complete my career, I'm sure that is what I will miss the most."

We are sad to see both Pat and Cheryl retire, but they have left us with a wonderful legacy, and because of them we are well prepared to move toward the future. Thank you to both Pat and Cheryl for their tireless devotion to the CLS program, to fellow faculty members and staff, and most of all to the students who have come through the program.

Graduating Class of 2012

Clinical Laboratory Science Program's 2011 Graduating Class

December 16, 2011, marked the graduation of the CLS Class of 2011 at the McNamara Alumni Center. Students from both the Twin Cities and Rochester campuses, along with their friends and family, celebrated the Center for Allied Health Programs commencement ceremony. The procession was led by Cheryl Swinehart, who carried the Ceremonial Mace of the University of Minnesota.

Karen Koch, Class President of 2012, delivered the welcoming address on behalf of the graduating class. Commissioner Edward Ehlinger from the Minnesota Department of Health delivered the commencement address. Before being appointed as the commissioner, Dr. Ehlinger served as Director and Chief Medical Officer for Boynton Health Service at the University.

Fifty-nine Clinical Laboratory Sciences (CLS) students graduated in this class. Each student walked across the stage to receive their diploma and a handshake from the program director Dr. Janice Conway-Klaassen and The Honorable Maureen Ramirez from the Board of Regents. A reception followed the ceremony.

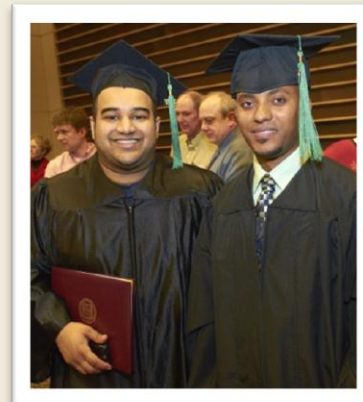
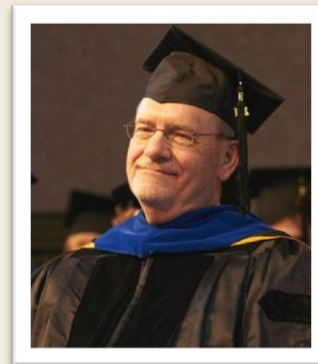


Congratulations and Best Wishes!

Lin Alyoussef
Kamawak Anota
Jackline Bakhiet-Kassiano
Ross Bernard
Fitsum Bizuneh
Sarah Brentrup
Edris Amano Bullo
Alexander Chebykin
Nath Phath Chhun
Kelly Clements
Huy Dao
Patrick Day
Kelsey Dodson
Alexander Eдорh
Kelsey Eide
Amino Esse
Miessa Gameda
Junaid Ghouse
Anna Hafdahl
Yonis Abdulkadir Hassan

Abdiweli Hersi
Sarah Hokenson
Melissa Hughes
Ahmed Yusef Isse
Defina Jaya*
Nick Jirsa
Matthew Johnson
Tina Johnson
Christine Jones
Katie Jordahl
Raquel Julik
Nisha Khanal
Karen Koch
Daniel Kronemann**
Meghan Larson
Latre Lawson
Blythe Thea Mayfield
Alex McElhose
Ariel Mercado
Noel Meuwissen

Raya Mijena
Abdiwahab Mohamed
Pam Mossey
Safio Mursal*
Kara Naber
Julius Nfon
Anthony Nguyen
Phuc Nguyen*
Nathan Okioga
Wei Ong
Michael Rapp**
Erica Riestenberg
Abdikarim Salad
Aaron Siems
Alicia Thor
Kim Tran
Merertu Tameru
Weldesebet
Txia Xiong
Jianping Yue



*Student earned a degree with distinction; **Student earned a degree with high distinction.

CLS Scholarships: A History of Support

Have you had a chance to look at the new CLS program web pages? If you haven't, take a look at the Center for Allied Health Programs scholarship web page found under the Admissions tab (<http://cahp.umn.edu/scholarships>). Eleven University of Minnesota CLS Scholarships are listed there, with a little of the history of each donor. Our program has been very fortunate to have had so many generous donors through the years.

For example, **Abner M. Neeley**, Class of 1938 was a 35-year employee of the Minneapolis Department of Health. He lived frugally, and when he passed away he left over \$500,000 in his estate for the University of Minnesota's CLS Program. These funds have provided scholarships to students who need help paying for temporary housing while they are engaged in their clinical rotations in rural Minnesota. **Constance Bakken** is another example who has provided funds for both the Constance Bakken Scholarship and the Dr. Karen Karni Scholarship. These scholarships have made a big difference in the lives of students who are earning a second baccalaureate degree, which makes them ineligible for most other kinds of financial aid.



One student attending the CLS Program on the Rochester campus commented on what a critical support this scholarship had been for her as she spent a year living away from her family during her studies. However, it's important to know that you don't have to donate thousands of dollars to make a big difference in the lives of our students!

Our Alumni Scholarship Fund is made up of donations of all sizes. Many of these are small donations from recent graduates wanting to give back to students just as they were helped, while other donations are from those who remember how hard it can be to just get by when you're a student. Please consider giving a donation to help support students who are single parents, those who are coming back to start a second career, and leaders who will be the first in their family to obtain a college degree. Thanks to the generosity of our CLS alumni and friends, we were able to give out over \$100,000 in scholarships this past year.

***From all of us – faculty, staff, and students, we say
'Thank You!'***



**Tell us what you think
of the new Tech's Talk format!
It matches our new website at
<http://cahp.umn.edu/CLS>**

2011 Contributors

The following contributed \$100 or more to the Clinical Laboratory Science Program in 2011

\$5,000 - \$100,000

Beckman Coulter Fdn
James K. Ferderer
Verna D. Mallek

\$1,000 - \$4,999

Marcine J. Forrett
Ella M. Spanjers

\$500 - \$999

Joanne S. Arvid
Steven A. Carlson
General Mills Fdn
Todd C. & Mary E. Jacobson
Marilyn D. Olson
Paul C. Schreckenberger
Mary K. Weimer
Phyllis J. Weiss
Andrew R. Yue

\$300 - \$499

Robert A. Dahl
Mary J. Eaves-Raich &
John J. Raich
Jean S. & Ronald D.
Halvorson
Jacquelin A. Heggernes
Gerald R. Mulcahy
Ethel V. Rodriguez
Igor N. Semenenko

\$100 - \$299

Ruth A. Anderson
Fritz R. & Carol A.
Arnason
Harriet I. Brown
Marilyn T. Budge
Michele V. Cain
Elise A. Church*
Virginia R. Coxe
Esther M. Damron
Larry M. Davidson
Matthew J. Decrans
Robert D. Dexter
Robin L. Donner
Sally J. Economon*
Grace Mary Ederer
David E. Ellis
Janet E. Flemming
Linda L. Fredrickson
Muriel O. French
Reggie L. Gausman
Nancy A. Geier
Mardie G. Geiser
Marjorie E. Giesen
Kathryn H. Glen
Ingrid B. & Lars U. Graff
Marilyn R. Haglund
Helen M. Hallgren
Marilyn J. Halonen

\$100-\$299, con't

Ruth M. Hartman
Robert P. Hirte
Karen K. Huff
Phyllis Jacobs
Lisa J. Jarvis
Patricia A. Joecks
Dorothy K. Karlen
Cheryl A. Kaup
Shirley E. Kenning
Patricia L. Koors
Usha R. & Sridhar Kota
George Kuprian
Vickie L. Larson
Mary H. Lazarus
Mary M. & Keith D.
Lerick
Jean J. Linne
Connie J. Luebke
Marilyn J. Lueck
Kay M. Malerich
R. L. Malmo
Jane F. Mayer
Joetta G. McClintock
Betty L. McMartin
Arlene M. Meadows
Barbara G. Melamed
Mary Lou G. Mohn

\$100-\$299, con't

Kathleen W. Nadreau
Joann M. Nelson
Beverly R. Ness
Patricia L. Norgren
Jeanne C. Olsen
Sheryl F. Olson
Bonita M. Parkman
David J. & Mary Jo
Pennington
Elizabeth H. Perry
James H. & Elberta L.
Prestegard
James W. Quaday
Kathryn L. Rantala
Kathleen K. Reimers
Debra C. Rodahl
John L. Roesler
Ruth M. Rosendahl
Laura G. Rude
James G. Ruggles
Jean M. Rysavy
Norynne M. Schiminsky
Janet E. Schultz
Kathleen B. Standing
Ha T. Su
Michael R. & Kathleen
M. Tekautz
Aija K. Vikmanis
Marcia K. Wall
Nettie M. Warwood
Robert D. & Karen H.
Wasson
Donna J. Wieb
Nancy A. Witstine
Xcel Energy Fdn

**If you wish to make a
contribution, please contact:**

**University of Minnesota
Foundation**

**Phone: 612-624-3333 or
800-775-2187**

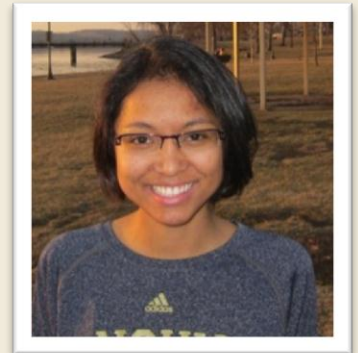
*Deceased

Student Highlights



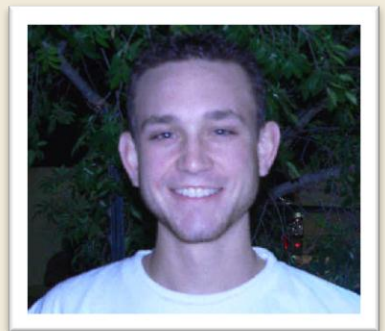
Jolene Haley is from Plainview, Minnesota and is currently living with her family as she attends the CLS program in Rochester. Jolene has not always lived in the area. After deciding that the University of Minnesota's graphic design program was not a good fit for her, she found herself driving to a recruiter's office and enlisting in the Navy. Within months she was living on an aircraft carrier and traveling the world. Jolene was promoted quickly through the military ranks and eventually became a jet mechanic. After the Navy, she returned to Rochester with a firmer career focus and started the CLS program. Jolene felt the transition from an aircraft mechanic to a Clinical Laboratory Scientist was a natural and logical fit because of the necessity to strictly follow procedures in both professions.

Mina Zo Andrianaivo was born and grew up in Madagascar. She came to the US ten years ago with her father, who was a doctoral student at the U of M. Her mother and one married brother currently also live here. The rest of her family lives in Madagascar and they keep in touch via skype. Mina was originally enrolled in the College of Biological Sciences when she heard Pat Solberg's talk introducing CLS in a health orientations class. She applied the next semester for our program, knowing that it would be a great fit. When she is not studying, she enjoys reading fiction and jogging. After graduation she would like to work in a hospital for several years, and then she plans to pursue a Master's degree program in CLS.



Originally from the Twin Cities, **Sandra Tekmen** has a previous degree from the U of M in Ecology, Evolution, and Behavior. Her husband is a physicist and she has four daughters 4-13 years in age. She worked in a research lab for many years, but was looking for a rigorous program to keep her in the lab and open new doors of opportunity. Her aunt is also a medical technologist. She is excited for clinical rotations, especially microbiology. She is hoping the rotations will help her decide where she should work. Sandra loves to cook and bake, read, cross-country ski, camp and travel.

Lance Harper is from Bulverde, Texas. He moved to Minnesota to escape the heat and be closer to family. He looks forward to Minnesota summers because he loves outdoor activities such as hunting, riding bike, and fishing. Lance's family includes his wife, two daughters who are three and 10 months old, plus a baby girl due in May. He holds a Bachelor of Science degree in biology and chemistry minor. Lance felt that his degrees alone were not marketable and needed to add the Clinical Laboratory Science degree to find a better job. Lance is confident that CLS is the right fit for him and his family, and he looks forward to the flexibility to work in other parts of the country. Upon graduation, Lance wants to stay in Rochester and pursue a Microbiology position at the Mayo Clinic.



Stay Connected!
Please update your contact information with the U of M Alumni Association at:
www.minnesotaalumni.org



New U of M Leadership



New University of Minnesota President

Dr. Eric W. Kaler was inaugurated as the 16th President of the University of Minnesota on September 22, 2011. Dr. Kaler previously served as provost and senior vice president for academic affairs and vice president for Brookhaven National Laboratory at Stony Brook University in New York. He has an undergraduate degree from the California Institute of Technology and a Ph.D. in chemical engineering from the U of M. He held faculty, department chair, and dean positions at the University of Delaware from 1989-2007, and was on the faculty at the University of Washington from 1982-1989. President Kaler has received many research awards and was elected to the National Academy of Engineering. His family includes his wife Karen and two sons Charlie and Sam. We welcome Dr. Kaler to the University and look forward to his leadership. His activities can be followed at the following website: <http://www1.umn.edu/president/index.html>.

University Senior Vice President for Academic Affairs and Provost

Dr. Karen Hanson was chosen by President Kaler to serve as senior vice president for academic affairs and provost and began her administration in February 2012. Dr. Hanson will oversee the academic activities and budgets of the university, faculty tenure and promotion, student recruitment and retention, and outreach and research. Dr. Hanson received her undergraduate degree from the University of Minnesota in 1970 and her doctorate in philosophy from Harvard in 1980. Prior to her appointment she was the executive vice president for Indiana University and provost for its Bloomington campus.



Vice President for Health Sciences

Upon the retirement of Dr. Frank B. Cerra, Senior Vice President for Health Sciences, Dr. Aaron Friedman assumed leadership for the Academic Health Center in January 2011. Dr. Friedman serves a dual role as Vice President for Health Sciences and Dean of the Medical School, overseeing six schools and colleges and several programs including our Center for Allied Health Programs. Dr. Friedman joined the medical school in 2008, and was also pediatrician-in-chief at the University's Amplatz Children's Hospital. Prior to arriving at the University, Dr. Friedman served as chair of his department at both Brown University and the University of Wisconsin-Madison. The annual State of the Academic Health Center presentations by Vice President Dr. Friedman can be found at the following website: <http://www.health.umn.edu/facultystaff/srvpfiles/index.htm>.

Update on UMTC at Rochester



The University of Minnesota, Rochester is pleased to offer newly constructed, modern living for students conveniently close to campus. 318 Commons is located in the center of Downtown Rochester, with a direct skyway connection to UMR, the Mayo Clinic, restaurants and shopping. Apartment-style living offers students security, on-site maintenance, a student community, and no need to pay for gas money!

Every apartment includes furnished living spaces, cable connections, wireless internet, a full kitchen with separate living room, and a dishwasher, washer and dryer. Housing staff are available to support students with the challenges of everyday living that inevitably come up during the college years. They are dedicated to helping students uphold community standards and problem-solve in a way that builds confidence and self-authorship.

New Student Services Staff



Shannon



Sarah



Debra



Robyn

The Center for Allied Health Programs is pleased to announce the arrival of new staff! Directed by **Shannon Hofmann**, CAHP Associate Director, the Student Services team will build a program that includes both in-person and virtual components to help support students' success.

Sarah Huhta Corrigan, M.S., brings an avid interest in biology and twelve years of experience in University of Minnesota advising and program planning. She will be developing advising services for current students.

Debra Markert, M.P.A., has a background in management and operations, student services, case management, and K-12 education. She is very experienced with U of M systems, policies, and procedures and brings a wealth of expertise to her new role as office manager for CAHP.

Robyn Zastrow, B.A., is a proud alum of the U of M and is excited to be working here after moving back from Chicago in 2011. She brings several years of experience in records and admissions from her former institution to her work with prospective students.

CLS Faculty Biosketches

Patricia Brennecke - I received my BS in Medical Technology from the U of M. In the early 70's I became the Laboratory Manager for the department, teaching laboratories after gaining some years of work experience. I was a teaching specialist for Chemistry, Hematology, Blood Bank and the Laboratory Medicine course. After a number of years as a full-time mom, I took a position at the National Marrow Donor Program, first as a Search Coordinator and later as a Patient Advocate. I worked for Minnesota Oncology before returning to CLS as the Clinical Coordinator. All of these positions contributed to the knowledge and skills for my current role of negotiating clinical rotation sites for our students, assigning rotations and providing preceptor training for the clinical sites throughout MN.



Mauri Brueggeman - I am originally from Wisconsin but completed my undergraduate degrees in Physiology and Medical Technology from the University of Minnesota in 2002 and 2003, respectively. I am certified as a Medical Laboratory Scientist by ASCP. I began my career as a specialist in Cytogenetics and found that I really enjoyed educating and training new employees within the department. I gained a full time position as a Teaching Specialist with the University in 2008. My teaching focus is Hematology and my research focus is on effective teaching & learning. I received my M.Ed. in Organizational Leadership and Policy Development from the University of Minnesota in 2011 and enjoy teaching and learning with each new CLS class.

Nancy Brunzel - I received my BA in Biology & Chemistry from the College of St. Catherine (today, St. Catherine's University) in St. Paul, MN and then attended the St. Joseph School of Medical Technology in Kansas City, MO. I received my Master of Science in Clinical Laboratory Science from the University of MN in 1999. I have worked in hospitals and reference laboratories in Missouri, Indiana, and Minnesota. From 1988-2004, I was the instructor and course coordinator for the chemistry curriculum in the CLS program at the University of MN. After some years as a private clinical laboratory consultant, I returned to the U of M as an assistant professor in the CLS program. I am delighted to be a faculty member in the CLS program and to have the opportunity to share this dynamic, diverse, and exciting profession with students.

Janice Conway-Klaassen - I earned my BS in Medical Technology from Michigan State University in 1974 and my MS in Microbiology from Wayne State University in 1978. I am certified as a Medical Technologist by ASCP and hold a specialty certification in Microbiology. In 2010 I received my PhD in Educational Psychology/Learning and Technology from the University of Nevada, Las Vegas. I am a member of the NAACLS Program Approval Review Committee and a NAACLS paper reviewer and accreditation site visitor. My teaching focus is currently microbiology, education and management, with research interests in the scholarship of teaching and learning in technology-enhanced education. I am pleased to be a part of a program with such a rich history.

Faculty Biosketches (con't)

Chris Desens - I received my Bachelor of Arts in Biology from the University of St. Thomas in 1998 and worked primarily in the business industry from 1998 -2006. I decided to return to school and earned my Bachelor of Science degree in CLS from the University of Minnesota in 2007. From 2007-2009, I worked in the Special Coagulation laboratory at Mayo Clinic. I was informed about a job opening for the new CLS program in Rochester, and have been fortunate enough to be working there ever since. I teach all laboratories in the program, with a focus on Chemistry. I am continually amazed at the different ways students perceive and interpret information, and am often challenged by the questions they ask.

Joanna George - I grew up in North Dakota, and received my B.S. in Medical Technology from Minot State University, my SBB in Virginia, and recently completed my Master's Degree in Professional Studies at the U of M this May. I worked as a technical supervisor in the blood bank and HLA lab in Virginia, and as a specialist in blood bank and bone marrow processing at the U, moving to the CLS program in 1990. As course director for Transfusion Medicine, I am working on some exciting projects, including a completely interactive computer antibody ID module and assisting Dr. Jeffrey McCullough's group with blood bank education in Afghanistan. I find seeing past students becoming leaders in our profession very rewarding.

Lynn King - I was born and raised on the "Iron Range" in Northern Minnesota, where I graduated from high school, Hibbing Junior College, and then Medical Technology at the U of M. For many years, I worked at a variety of jobs in clinical chemistry at Fairview University Hospital, including drug analysis and rotating Senior Technologist. I currently teach Chemistry, Urinalysis, and hematology labs as a teaching specialist and also prep the chemistry and urinalysis labs. I love getting to know our students and watching them develop skills and confidence during their senior year.

Lorna Ruskin - I received a B.S. in Medical Technology from Moorhead State University (now Minnesota State University at Moorhead). I am an ASCP certified Medical Technologist with a varied work experience. Prior to being faculty in the Clinical Laboratory Science program at the University of Minnesota, I was the program director and faculty for a Medical Laboratory Technician and a Medical Laboratory Science program for 9 years. For the past few years, I have been coordinating a simulated laboratory experience for Medical Laboratory Technician students as part of a Department of Labor Grant championed by Allina Hospitals & Clinics and granted to Saint Paul College.

Donna Spannaus-Martin - I grew up in St. Paul, Minnesota, earned a major in biology at North Park College in Chicago, and then completed the medical technology program at Michael Reese Medical Center in Chicago. I worked there for a few years before going to Iowa State University for my Master's and Ph.D. degrees in biochemistry. I have done research on the immune response and on cholesterol metabolism. After teaching at Iowa State University and the University of Tennessee, I was thrilled to return and join the CLS Program. I love teaching and I enjoy creating the online modules that teach students about CLS. I am also pleased to be involved in the AHC's inter-professional course, which brings students together from all the healthcare professions for learning.

Phyllis Trcka - I was a 1982 graduate of the University of Minnesota Medical Technology program and was employed for 26 years by Mayo Clinic where I worked in many disciplines of clinical Microbiology as a technologist and a lab manager. Returning to the program to teach laboratory science was an easy transition but I also recognized the need to further my understanding of educational strategies. I will be awarded a Master's degree in Adult Education this spring from the University of Minnesota, 30 years after completing my undergraduate degree. It is fun to channel the knowledge I have gained in the clinical practice to the students we work with every day.

Stephen Wiesner - After graduating from the Medical Laboratory Technician program at Madison Area Technical College in 1990, I moved to the Twin Cities and worked in medical labs for Fairview and Allina while pursuing the Medical Technology degree at the U of M. After earning my doctorate on leukemia genetics in 2005, I completed two post-doctoral fellowships in neurosurgery. I came back to the CLS Program in 2007 where I teach hematology, immunology and molecular diagnostics. I continue to research the genetic mechanisms of high grade brain tumor development, and also focus my inquiries on the learning strategies of our students as they transition from traditional teaching methods to courses that are taught with significant computer-based components.

Andrew Yue - I am a native Minnesotan. After earning my B.S. degree in Medical Technology from the University of Minnesota I moved down to Rochester. Over the years I have worked at the Mayo Clinic, Olmsted Medical Center, American Red Cross and Musculoskeletal Transplant Foundation. Currently I am the Program Coordinator for the Rochester CLS program. I really like working with students and the education side of the CLS profession, and I'm proud to be a part of the U of M.

Mary Jane Yue - Originally from New York, I earned my BS in Biological Sciences from Stony Brook University. I entered the Medical Technology Program at Yale New Haven Hospital in Connecticut where I also worked part-time in Hematology. After moving back to New York, I worked at New York Hospital Cornell Medical Center, and then it was off to Boston to pursue my MS in Medical Laboratory Science at Northeastern University. I began training the co-op students from Northeastern University Medical Technology Program and Dartmouth Medical School and realized how much I enjoyed working with students. I have been a teaching specialist here for over 15 years, and I'm proud to be a part of the premier CLS program here at the U of M.

Clinical Laboratory Sciences Program
Center for Allied Health Programs
University of Minnesota
MMC 711, 420 Delaware St SE
Minneapolis, MN 55455

Nonprofit Org.
U.S. Postage
PAID
Twin Cities, MN
Permit No. 90155

Clinical Laboratory Sciences Program
Center for Allied Health Programs
University of Minnesota
MMC 711, 420 Delaware St SE
Minneapolis, MN 55455

Office | Phillips-Wangensteen Room 15-194
Tel | (877) 334-2659
Fax | (612) 626-8127
E-mail | cahpinfo@umn.edu
Web | www.cahp.umn.edu



Celebrating 90 Years in 2013!

By Patricia Brennecke, CLS Alumni Committee Chair

Next year is the 90th anniversary of our Clinical Laboratory Sciences Program (formerly known as Medical Technology)! This event will include tours, speakers and anniversary class activities as well as our annual banquet. Our Alumni Committee will start planning this summer and needs your ideas for fun activities for each of our graduation classes. We hope you can join us, as this promises to be a celebration you won't want to miss! If you have suggestions for what alumni would like to see and do on campus, or if you plan to volunteer for the alumni committee, please contact us at (877) 334-2659.



Printed on recycled and recyclable paper with at least 10 percent postconsumer waste material.

The University of Minnesota shall provide equal access to and opportunity in its programs, facilities, and employment without regard to race, color, creed, religion, national origin, gender, age, marital status, disability, public assistance status, veteran status, sexual orientation, gender identity, or gender expression.

Inquiries regarding compliance may be directed to the Director, Office of Equal Opportunity and Affirmative Action, University of Minnesota, 274 McNamara Alumni Center, 200 Oak Street S.E., Minneapolis, MN 55455, (612) 624-9547, eoaa@umn.edu. Website at www.eoaa.umn.edu.

This publication/material is available in alternative formats upon request. Please contact the Center for Allied Health at 877-334-2659, or send an e-mail to cahpinfo@umn.edu.

© 2010 Regents of the University of Minnesota. All rights reserved.



Center for Allied Health Programs

UNIVERSITY OF MINNESOTA
Driven to Discover™

